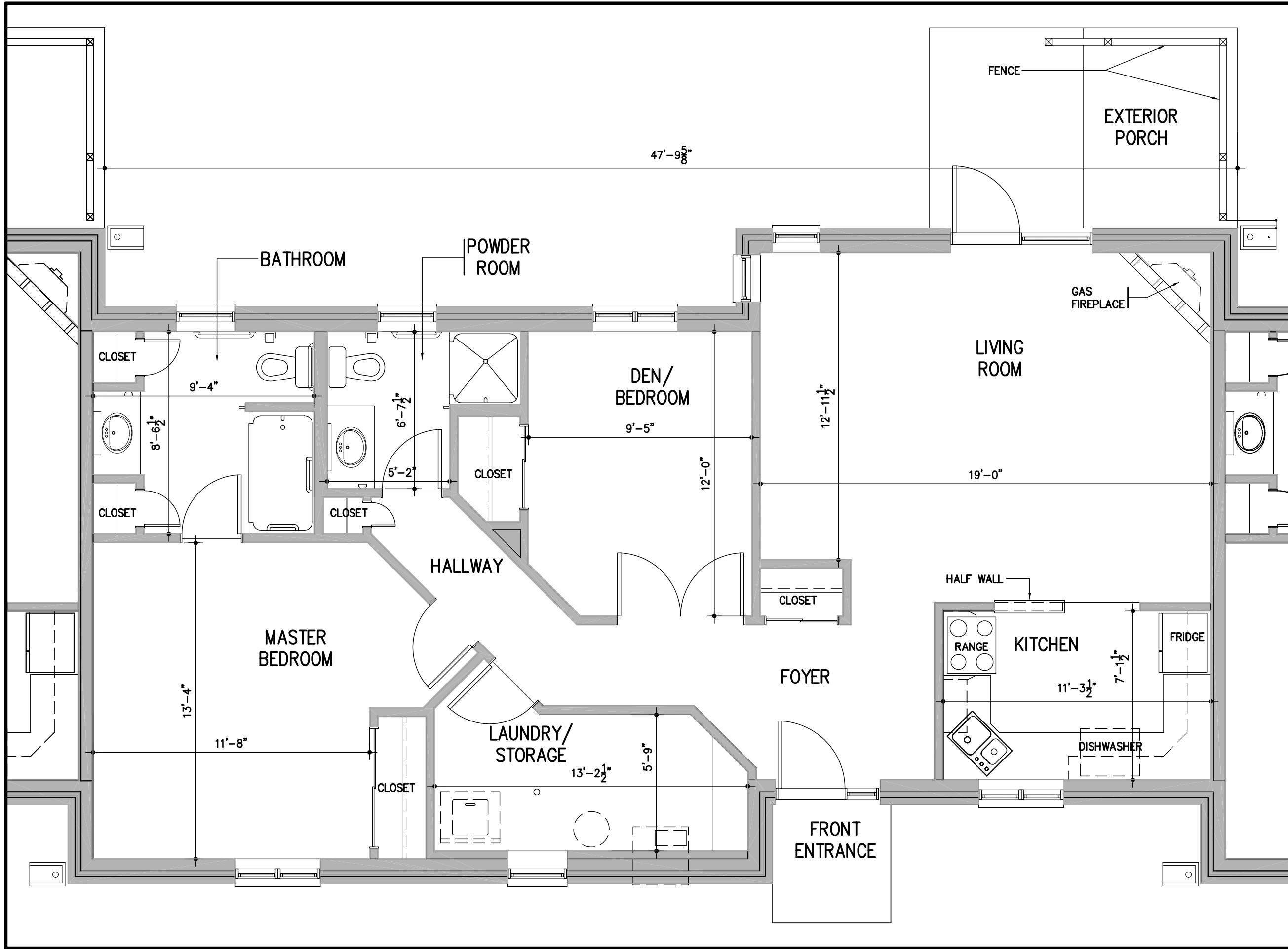


M:\2003\031050\arch\details\031050_da01_gbl.dwg - 18.05.04 10:20am



TOTAL UNIT AREA:
1,179 sq.ft

scale 1/4" = 1'-0"

drawn by GBL

job no. 031050

date MAY 2004

PROJECT
**GLEN GARDEN
PHASE III**

TITLE
**TYPICAL UNIT
LAYOUT**

The THOMPSON ROSEMOUNT GROUP Inc.
architect & consulting engineers
CORNWALL KINGSTON FERGUS OTTAWA